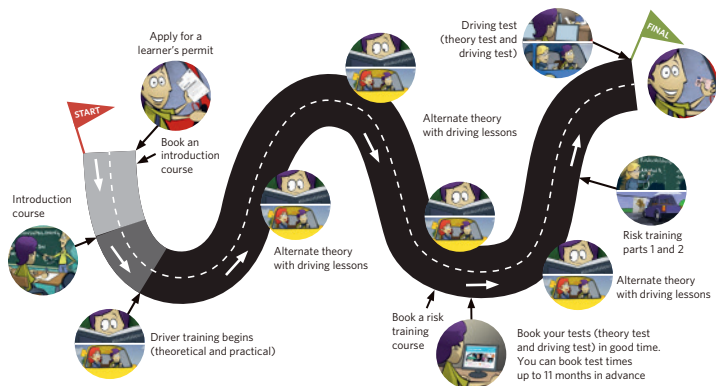


Driving license for a passenger car

B License



This brochure has been prepared by the Swedish Transport Administration to provide you with information about the requirements for obtaining a driving license, how to obtain training, what to expect from the theory and driving tests and what to keep in mind before arriving to take the tests.



Training is vital

Before you take your theory and driving tests with the Swedish Transport Administration, you will need to train so that you know what is required of you to be a safe and eco-friendly driver. You must also have a learner's permit. You apply for this from the Swedish Transport Agency.

You can train at a driving school, with a private tutor or you can combine the two. The choice is yours.

If you intend to practice driving privately, you will need to attend an introduction course with the person who is going to teach you. You can do this at a driving school approved by the Swedish Transport Agency.

As part of your training, you must complete the two-part risk training course. Risk training is available from driving schools approved by the Swedish Transport Agency.

Practice your knowledge and skills whenever you can. Like everything in life, you need a lot of practice and study in order to succeed.



It is important that you are a safe and aware driver once you take to the roads. You will need to be able to predict likely events on the road and act correctly in any given situation. A driving license offers freedom but it is also a great responsibility.

Continue with your training until you feel ready to take your tests.

Feel free to ask your driving instructor to check your knowledge and skills before you arrive at your theory and driving tests.

Tests are conducted at the Swedish Transport Administration.

Good luck!



The theory test is designed to demonstrate that you have the theoretical knowledge you need to be a safe driver.

The driving test is your opportunity to demonstrate that you can apply this knowledge in practice.

Both the theory and driving tests verify that you have achieved the goals in the course curriculum for obtaining a B License.

The B License Course Curriculum (TSFS: 2011:20) is available on the Swedish Transport Agency website at www.transportstyrelsen.se

Foreign driving licenses in Sweden

If you have a driving license issued in a country outside the EEA, you can drive for one year after you have registered as a resident of Sweden.

Once that year has elapsed you will need to take the theory and driving tests to obtain a Swedish driving license.

If you are not registered as a Swedish resident, there is no limit to how long you can drive on your foreign license.

If you have a foreign driving license issues in another EEA country, you are permitted to drive on that until it expires.



Theory test for a B License

The theory test measures whether you have the necessary theoretical knowledge to be a safe, eco-friendly driver.

The test measures your knowledge in five areas:

1. Vehicle knowledge and manoeuvring, for example:

- how the vehicle works and how the road conditions affect its driving characteristics;
- which risks may arise if the vehicle fails to function properly; and
- the link between driving technique and the vehicle's behaviour.

2. The environment, for example:

- how the means of transport you choose can affect the environment; and
- how to drive the vehicle in a safe, eco-friendly manner.

3. Road safety, for example:

- what it means to demonstrate good judgement when interacting with other road users;
- how to adapt your speed, distance and other driving parameters to various situations; and
- how different road conditions and environments affect driver behaviour and road safety.

4. Rules of the road, for example:

- road signs, road markings, speed limits, meeting oncoming traffic and overtaking, cargo, passengers and obligations to other road users.

5. Actions and reactions, for example:

- how medicines, alcohol, other drugs, stress and tiredness can affect driver behaviour;
- how driving at various times of day can affect driver behaviour and road safety; and
- how peer pressure can affect driver behaviour and road safety.

What to expect from your theory test

The theory test begins with a video describing the testing procedure. The video is available in a number of languages. You can also watch the video online before you come to the test at www.trafikverket.se/kunskapsprov.

Before you can start the test you need to attest that you will not cheat or assist anyone else to cheat.

The test consists of 70 questions, 65 of which count towards the final result. This is because there are five test evaluation questions. You will not be able to see which are the test evaluation questions. You must answer 52 questions correctly to pass the test. You will have 50 minutes to complete the test.

ID requirement

When you arrive to take your test you will be required to prove your identity with a valid ID with a photograph that is clearly of you. Information regarding the ID documentation that will be accepted is available at www.trafikverket.se/korkort.

Having your photograph taken at the Swedish Transport Administration

Before taking the theory test, you will need to have your photograph taken at the Swedish Transport Administration Test Centre.

If you are intending to be photographed on the same day as your theory test, you need to arrive at least 30 minutes before the test begins. Remember to bring valid proof of identity.

After your theory test

You will be informed immediately whether you have passed or failed the theory test. We will send the result to your email address. Your result is also available from the test-booking service at www.trafikverket.se/bokaprov.

Your result will show how many questions you answered correctly in the various subject areas.

Once you have *passed* your theory test, the result is valid for four (4) months. You cannot take your driving test until you have passed the theory test.

If your *fail* your theory test, it is important that you study more before taking the theory test again.

Theory tests in other languages

The B License theory test has been translated into several languages. You can choose your language when you book the test.

Audio version of the test

If you have difficulty reading, you can listen to the questions in Swedish. If you are taking the test in a language other than Swedish, you can change the language to Swedish at any time during the exam.

Oral test, extended time limit, interpreter or sign language interpreter

You may apply to take the test orally, with an extended time limit or with an interpreter or sign language interpreter. You will find the application form at www.trafikverket.se.



Driving test for B License

When taking your driving test you will be required to demonstrate that you can independently apply your theoretical knowledge to safe driving practice.

Your competence will be assessed in the following areas:

Vehicle knowledge

- You should be able to perform a safety inspection of the vehicle – for example, by checking the lights, tyres and oil – and you will naturally need to demonstrate an understanding of the risks that can arise if the vehicle does not function properly.

Manoeuvring

- You must be able to manoeuvre the vehicle; for example, through the correct use of the pedals.
- You must be able to control the vehicle both when driving straight ahead and when turning on bends and corners.
- You must be able to reverse and park in a routine manner.
- You must be able to safely operate the controls while driving; for example, adjust the heating and operate the windscreen wipers.

Eco-friendly driving

- You must be able to demonstrate good planning and foresight in your driving.
- You must be able to select the most appropriate gear for both traffic safety and the environment.

Rules of the road

- You must be able to demonstrate familiarity with the rules of the road and comply with them in a routine manner that allows for functioning interaction with other road users.

Road safety and behaviour

- While driving, you must be aware of your surroundings and adapt your driving accordingly.
- You must know where, when and how you should be looking in different situations.
- You must be able to identify and understand the risks in traffic and be able to plan your driving so that you are prepared to react when the situation demands it.
- You must adapt your speed to the current visibility, road conditions and situation.
- You must position the vehicle clearly on the road; for example, when turning or changing lane.
- You must drive within safety margins; for example, by adapting your distance from other road users and stationary vehicles.
- You must use your indicators in good time to show where you are going.



What to expect from your driving test

The driving test begins with an explanation of the procedure and what the examiner will be assessing.

If you do not speak Swedish, you can watch a video at the start of the test. The video is available in a number of languages.

You can also watch the video online before you come to the test at **www.trafikverket.se/korprovb**

After the introduction you will be asked to perform a safety inspection. You will then be asked to drive for a minimum of 25 minutes in a variety of road conditions; for example, urban and rural.

The examiner will give you clear instructions on which route to follow. Should a dangerous situation arise in which the examiner is required to intervene, you will still be considered as the driver of the vehicle and remain responsible for what happens during the test.

ID requirement

As with the theory test, you will be required to present valid ID with a photograph that is clearly of you.

You will also be required to attest that you do not hold a driving license issued in another EEA country.

After the driving test

The examiner will make an overall assessment of your driving and tell you whether you have passed or failed immediately after the test ends. We will also send notification of your result to your email address.

Your result is also available from the test-booking service at www.trafikverket.se/bokaprov.

You must **pass** both the theory and driving test within the four-month period of validity; otherwise, you will be required to take both tests again.

If you **fail** your driving test, the reasons will be explained to you. It is important that you put in more practice before retaking the test.

Content of the driving test

The examiner will show you which elements may be included in the driving test. The following elements are included:

Safety inspection

You will begin by performing a safety inspection including one or more of the following points:

- lights, indicators, reflectors and brake lights
- windscreen wipers and washers
- steering
- brakes
- wheels and tyres
- fluids; for example, washer fluid, coolant, brake fluid and engine oil
- the vehicle's heating system.

The examiner will give your clear instructions on what to check during the safety inspection.

If you discover any defects in the vehicle you should be able to suggest measures to rectify them. You shall independently check the various functions. If it is not possible to complete any of the checks on your own, ask the examiner to assist you.

Driving position

You should also adjust your seat, headrest, steering wheel, mirrors and safety belt.

The examiner will assess whether or not you have a safe driving position.

Emergency stop

You may be asked to perform an emergency stop during your test. An emergency stop means that you must bring the vehicle to a halt over the shortest possible distance.

The examiner will give you clear instructions regarding this element of the test and tell you when it is completed.

An emergency stop must be performed at minimum speed of 50 kmph. The road conditions determine the speed at which you will be instructed to brake.

The examiner will assess whether you were able to bring the vehicle to a halt over the shortest possible distance in an emergency situation.

Parking

You may park in a car park or roadside parking space and you should tell the examiner when you think you have completed the parking manoeuvre.

The examiner will assess your awareness and manoeuvring of the vehicle. The examiner will also assess how you have positioned the vehicle in the parking space and the distance to other vehicles.

Reversing

You will be asked to reverse during the driving test. The examiner will provide clear instructions; for example, where and how far you should reverse. This will provide you with ample opportunity to plan your reversing manoeuvre.

The examiner will assess your positioning, awareness, interaction with other road users and manoeuvring of the vehicle.

Hill start

You may be asked to perform a hill start, either facing up or down the slope.

The examiner will assess your awareness, the interaction between the clutch and accelerator and your signalling.



Three-point turn

The examiner may ask you to perform a three-point turn during the driving test. This may be at a predetermined location or a place of your choosing.

The examiner will assess how you performed the turn and whether you did so safely.

Pulling away from the kerb

The examiner may ask you to move off from a parked position at the kerb.

The examiner will assess how you perform this manoeuvre.

Using the controls

The examiner may ask you to use or adjust one of the vehicle's controls while driving. Weather conditions may even mean that you feel the need to use one or more of the vehicle's controls.

The examiner will assess your awareness and road position and how you manoeuvre the vehicle while doing so.



Unprotected road users

During the driving test you may pass unprotected road users or playing children.

The examiner will assess your awareness, speed adaption and hazard recognition.



Driving in lane

During the test you may find yourself on a dual carriageway or motorway in a situation where you must choose your lane based on your intended journey.

The examiner will assess your choice of lane and how you signal your intention to other road users.

The examiner will also assess your awareness, as well as and how you adapt your speed, distance from the vehicle in front and road positioning.

Changing lanes

During the driving test you may be called on to change lanes on one or more occasions. Whenever you change lanes it is important to interact with other road users, plan your driving and clearly signal your intentions. It is also important that you maintain the correct distance from the vehicle in front.

The examiner will assess your awareness, interaction with other road users, how you plan your driving and how you signal your intentions.

Intersections

You will pass various types of intersection with varying traffic regulations and visibility.

The examiner will assess your awareness, speed adaption, how you comply with the rules of the road, your foresight and preparedness to act. Your interaction with other road users is also important in terms of how you signal your intentions and position your vehicle on the road.

Signal-controlled junctions

During the driving test you may be required to cross a junction with traffic lights. It is important that you adapt your driving as you approach the junction, predict different events and prepare yourself for the lights to change.

The examiner will assess how you adapt your speed, your awareness and how you position the vehicle on the road.

The examiner will also assess your interactions with other road users and compliance with traffic regulations.

Roundabouts

If you pass a roundabout during your test it is important how you interact with other road users, signal your intentions and position your vehicle on the road. It is also important that you follow the applicable traffic regulations.

The examiner will assess your awareness, speed adaption, how you apply the rules of the road, your foresight and preparedness to act.



Passing stationary vehicles

During your driving test you may need to pass stationary vehicles; for example, buses at bus stops or vehicles parked at the kerb. It is important that you adapt your speed and predict different events.

The examiner will assess your awareness, speed adaption and hazard recognition.

Driving in built-up areas

During the driving test you will be required to drive through built-up areas with various speed limits and traffic conditions.

The examiner will assess how you adapt your speed, your awareness and how you position the vehicle on the road. The examiner will also assess your hazard recognition.

Independent navigation

The examiner will instruct you to independently navigate to various destinations. This may be a destination that you know, in which case you may choose your own route. It may also be a signposted destination. If you take a wrong turn, the examiner may ask you to turn around and continue towards the intended destination. If you notice that you have taken a wrong turn, you may turn around and continue towards the intended destination.

The examiner will assess your awareness, signalling, position on the road and ability to follow directions. It is also important to interact well with other road users.



Driving through roadworks

Roadworks are a relatively common feature of the road network. Some have temporary road markings to assist you to pass through them in the optimal manner.

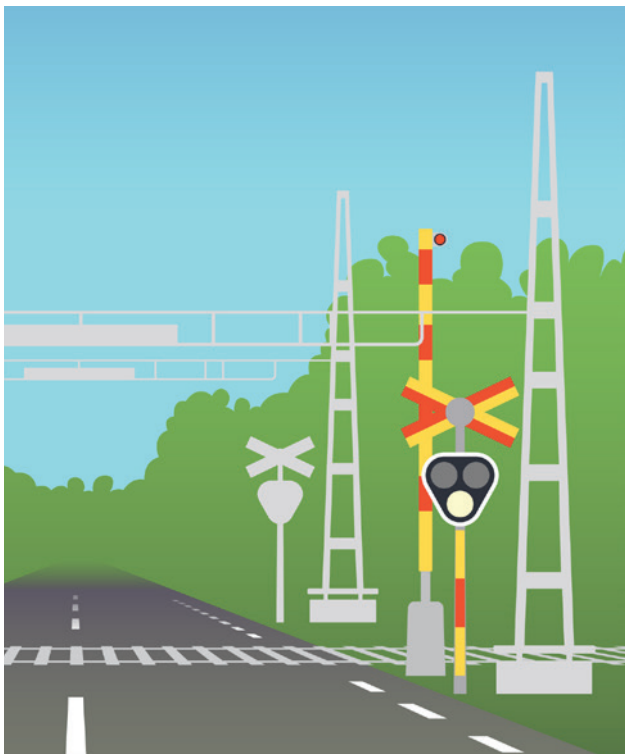
If you pass through roadworks during the driving test, the examiner will assess your hazard recognition, awareness, speed adaption and preparedness to act. The examiner will also assess your interaction with other road users and road workers.



Railway and/or tram crossings

During the test you may need to cross railway or tram lines.

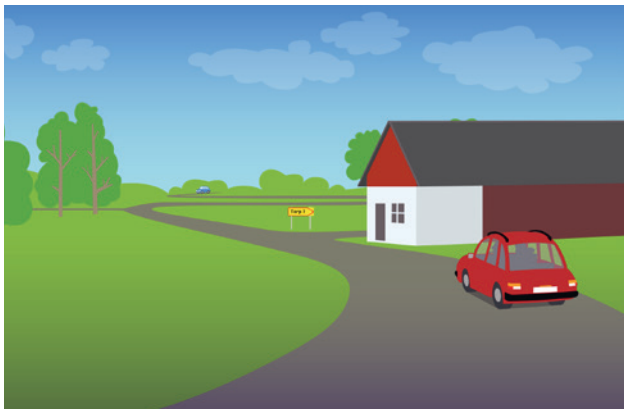
The examiner will assess your awareness, hazard recognition and how you follow traffic regulations.



Driving on narrow and/or winding roads

During the test you may be called on to drive on narrow or winding roads with various speed limits. These roads may be asphalted or gravel.

The examiner will assess your hazard recognition, speed adaption, awareness, road positioning and interaction with other road users.



Motorways, expressways or similar

During the test you may be called on to drive on a motorway or expressway with a speed limit of 120 kmph.

The examiner will assess your interaction with other road users, distance from the vehicle in front and how you position the vehicle in the lane. The examiner will also assess your awareness, use of ramps and exits and speed adaption.

Trunk road access

You may be called on to join trunk roads with various speed limits. Your task is to plan and implement your ingress in a safe manner.

It is important that you adapt your speed, position yourself correctly and pay close attention.

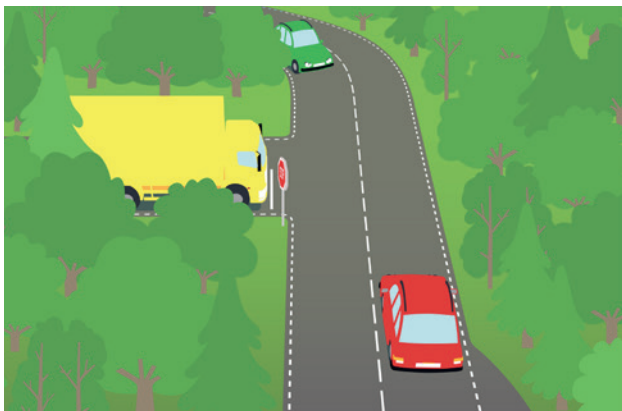
The examiner will assess you awareness, speed, interaction with other road users and hazard recognition.

Turning off trunk roads

You may be called on to exit trunk roads with various speed limits. Your task is to plan and implement your exit in a safe manner.

It is important that you adapt your speed, position yourself correctly, signal and use the hard shoulder where necessary.

The examiner will assess you awareness, hazard recognition and interaction with other road users.



Driving on trunk roads

During the test you may be called on to drive on various types of trunk road with different speed limits.

The examiner will also assess your awareness, how you adapt your speed and distance from the vehicle in front, your road positioning and how you follow the traffic regulations.

Overtaking

You may need to overtake another vehicle during your test. It is important that you choose the correct place to overtake, that you manoeuvre correctly and give clear signals.

The examiner will assess your awareness and positioning during the overtaking manoeuvre. The examiner will also assess your hazard awareness.

Meeting oncoming traffic

You may find yourself in a situation that requires action on your part and interaction with other road users. It is important that you demonstrate the ability to assess the risks presented by oncoming traffic.

The examiner will assess your ability to assess risks and take measures such as adapting your speed and repositioning your vehicle.

Reduced visibility and darkness

Darkness, fog, heavy rain and low sun are a few examples of conditions that may affect visibility during your test.

The examiner will assess your hazard recognition, vehicle positioning on the road and how you use full beam and dipped headlights. The examiner will also assess your awareness and distance from the vehicle in front.

Hazardous and slippery road conditions

It may be slippery when you take your driving test, whether that be due to snow, ice, surface water, mud or hot asphalt. It is important that you adapt your driving to the prevailing road conditions.

The examiner will assess your hazard recognition, speed adaption and how you position the vehicle on the road. The examiner will also assess your awareness and distance from the vehicle in front. framför dig.

Situational questions

The examiner may choose to ask questions related to situations that arise during your driving test.



When taking the theory and driving tests, you must demonstrate that you have sufficient knowledge to be a safe, eco-friendly driver.

**Make sure
you get good
training and
practice hard - and
good luck!**

BOOK YOUR TESTS

You can book both the theory and driving test at the same time.

You always begin with the theory test. You must pass this before you can take the driving test.

A pass in the theory test is valid for four months.

We recommend that you book times so that you can take your theory and driving tests a few weeks apart.

If you fail the theory test you then have the opportunity to take it again without needing to cancel your driving test appointment.

Those taking the theory and driving tests for the first time are given priority for the first available times.

*Book your
theory and
driving tests in
good time!*

You can book your theory
and driving tests at
www.trafikverket.se/bokaprov

or by contacting
Swedish Transport Administration
Customer Services on +46 (0)771 17 18 19.



Trafikverket, 781 89 Borlänge. Visiting address: Röda vägen 1
Telephone: +46 (0)771 921 921. Text telephone: +46 (0)10 123 50 00.
www.trafikverket.se/korkort